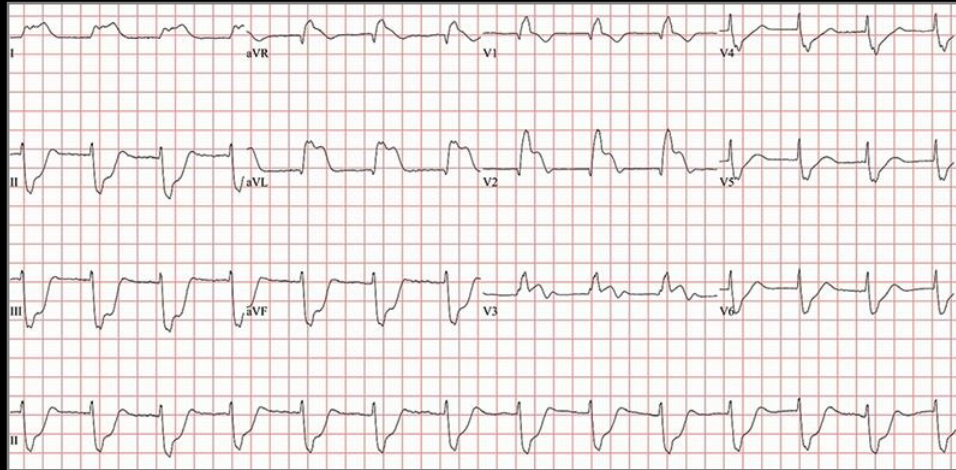


Image Challenge



Q: Which coronary artery is occluded?

1. Left anterior descending
2. Left circumflex
3. Left diagonal branch
4. Left main stem
5. Right



Image Challenge

Q: Which coronary artery is occluded?

Answer:

4. Left main stem

The 12-lead electrocardiogram shows ST-segment elevation in leads V1, V2, V3, I, aVL, and aVR and ST-segment depression in leads V4, V5, V6, II, III, and aVF, findings suggestive of occlusion of the left main stem of the coronary artery. The patient recovered following revascularization.

